



**India Meteorological Department
(Ministry of Earth Sciences)**

HOURLY UPDATE ON CYCLONIC STORM “FENGAL”

BULLETIN NO. 08

DATE: 01-12-2024

TIME OF ISSUE 0130 HRS IST

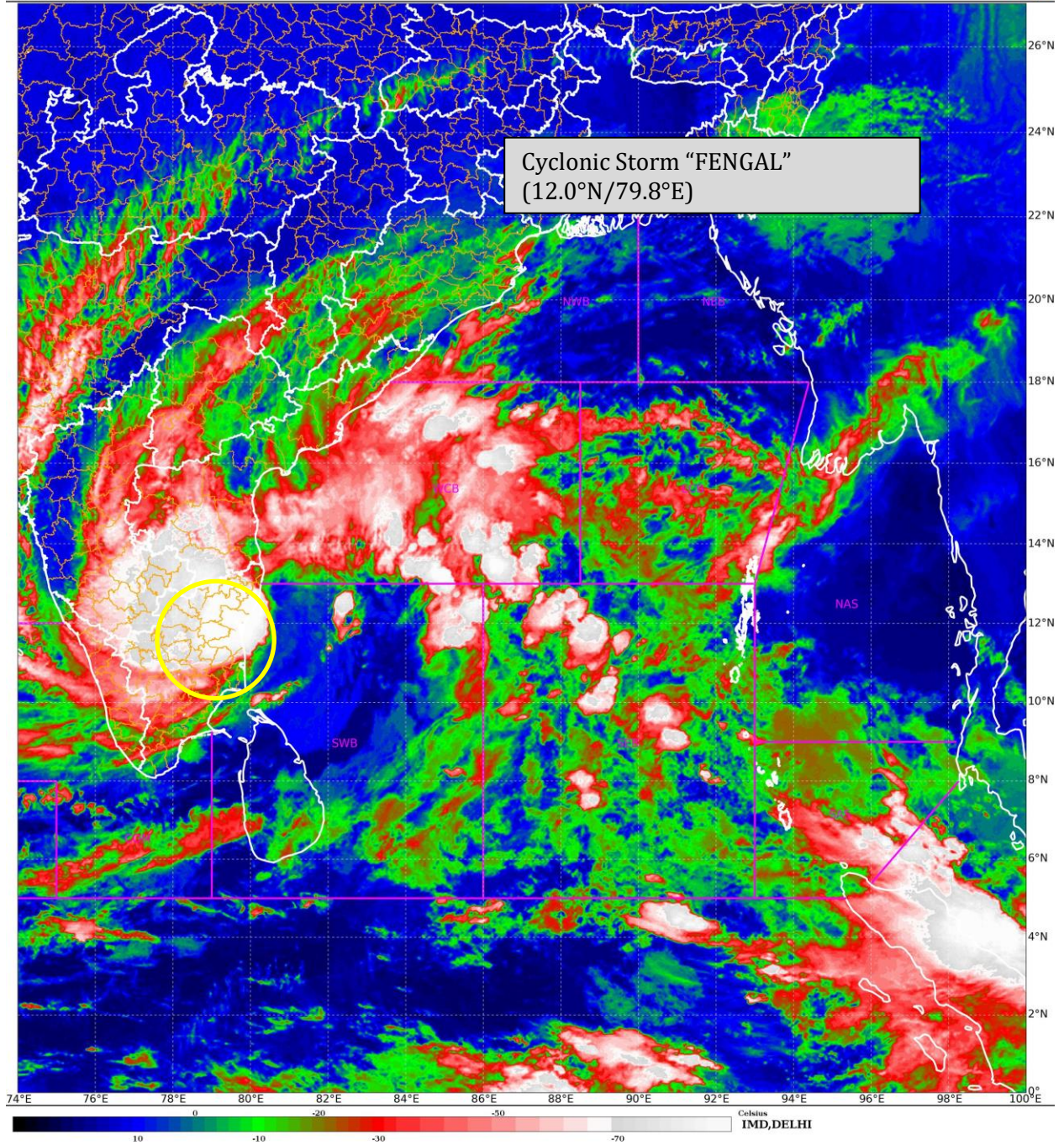
DATE/TIME (IST) OF OBSERVATION	BASED ON 01-12-2024 (0030 HRS IST)
LOCATION LATITUDE/LONGITUDE	The Cyclonic Storm “FENGAL” [pronounced as FEINJAL] over north coastal Tamilnadu & Puducherry remained practically stationary during past 1 hour and lay centered at 0030 hrs IST of today, the 01 st December 2024 over the same region near latitude 12.0°N and longitude 79.8°E, close to Puducherry, as a cyclonic storm with a wind speed of 65-75 kmph gusting to 85 kmph.
CURRENT INTENSITY WIND SPEED	Cyclonic Storm 65-75 kmph gusting to 85 kmph
FORECAST	The cyclonic storm “FENGAL” will move west-southwestwards slowly and weaken gradually into a deep depression during the next 3 hours. The system is being continuously monitored by the Doppler Weather Radar at Chennai & Karaikal.
OBSERVED RAINFALL FROM 0830 HRS IST OF 30 TH NOV TO 0030 HRS IST OF 01 ST DEC (0300- 1800 UTC). (cm)	Chennai (Meenambakkam): 11.4cm Chennai (Nungambakkam): 11.4cm Puducherry: 39 cm Cuddalore:8.3cm

This is the last hourly bulletin in association with the **Cyclonic Storm “FENGAL”**. However, three hourly national bulletins will continue during the stage of the cyclonic storm and six hourly bulletins during the stage of depression.

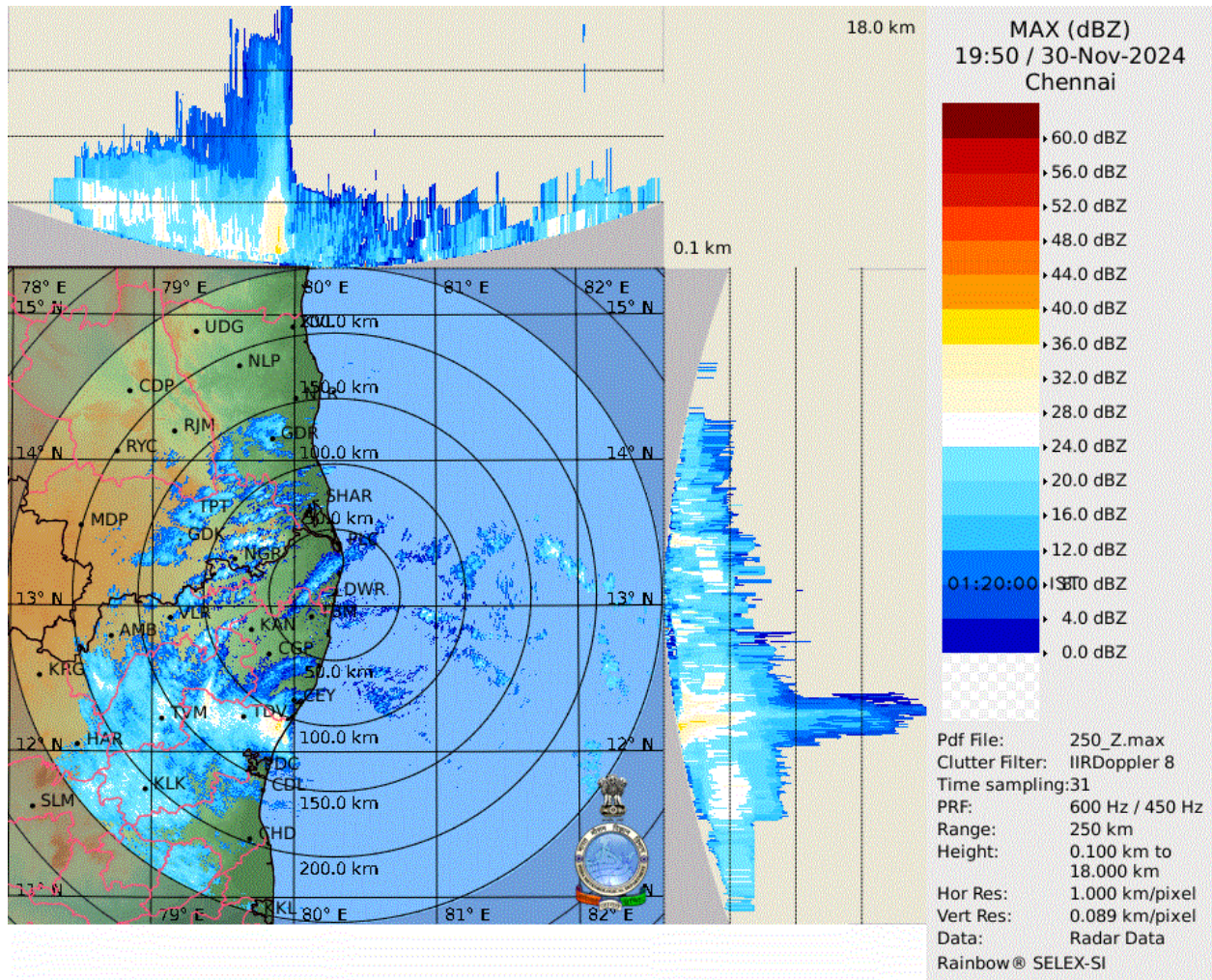
SATELLITE IMAGERY

SAT : INSAT-3DR IMG
IMG_TIR1_TEMP 10.8 um
LIC Mercator

30-11-2024/(1915 to 1942) GMT
01-12-2024/(0045 to 0112) IST

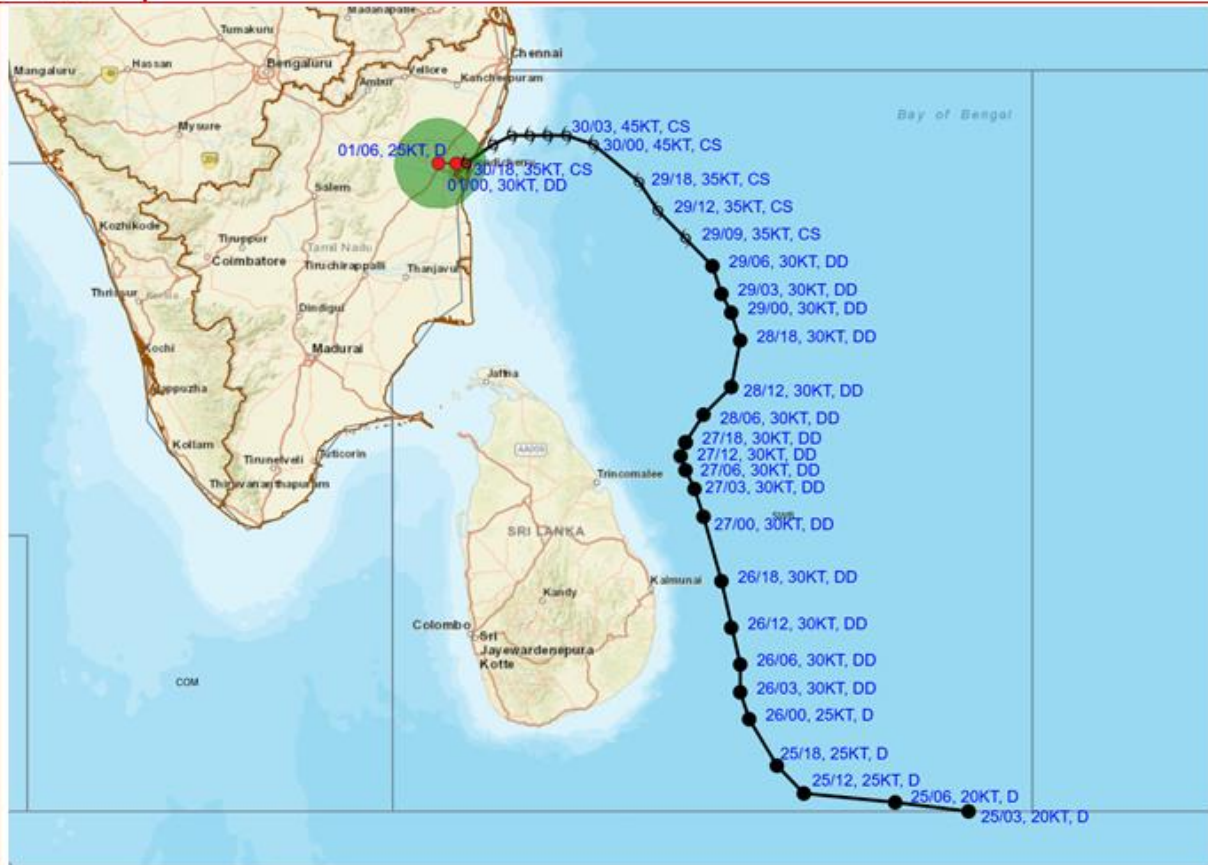


RADAR OBSERVATIONS (MAX_Z) OF DWR CHENNAI





OBSERVED AND FORECAST TRACK ALONG WITH CONE OF UNCERTAINTY OF CYCLONIC STORM "FENGAL" OVER NORTH COASTAL TAMIL NADU AND PUDUCHERRY COASTS BASED ON 1800 UTC (2330 HRS. IST) OF 30TH NOVEMBER, 2024.



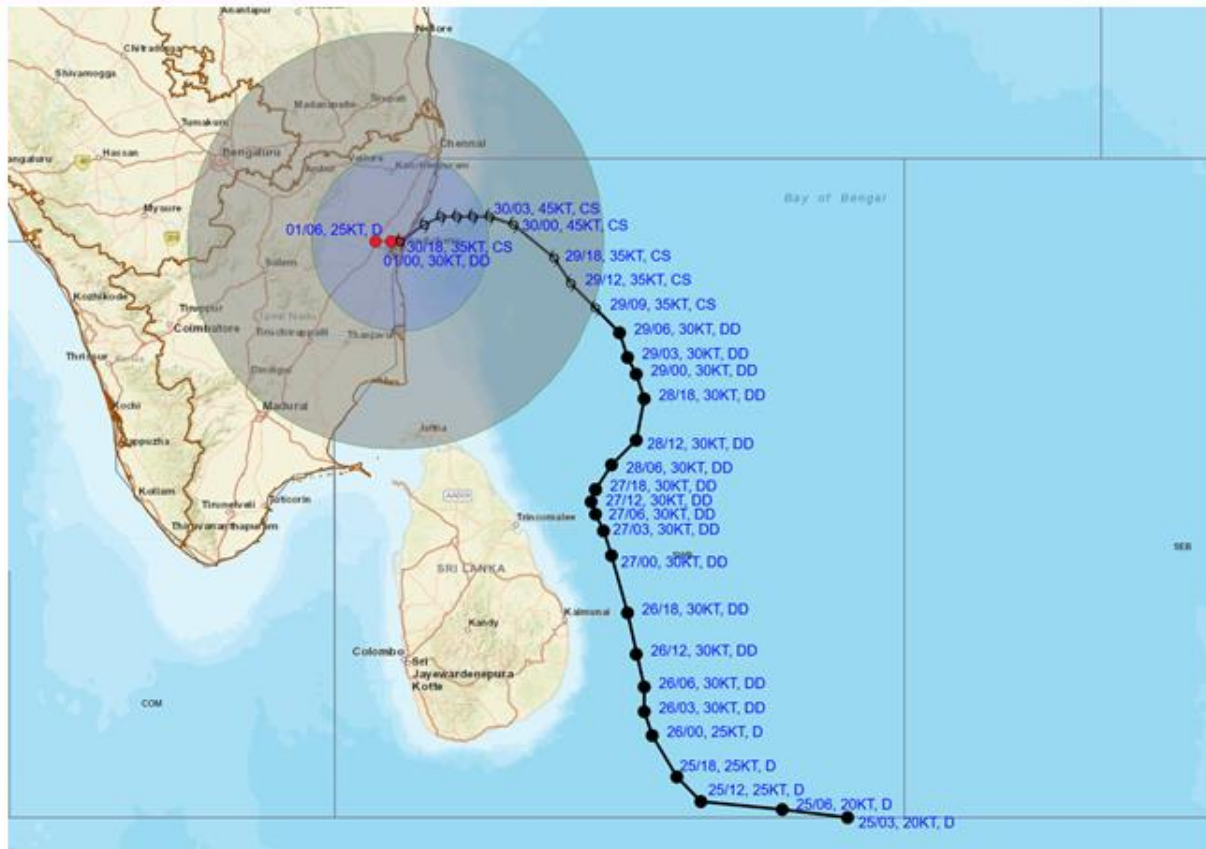
DATE/TIME : IN UTC
 IST : UTC + 0530
 KT : NAUTICAL MILE S/HOUR = 1.85 KM/HOUR
 LPA : LOW PRESSURE AREA
 WML : WELL MARKED LOW PRESSURE AREA
 D : DEPRESSION (17-27 KT)
 DD : DEEP DEPRESSION (28-33 KT)
 CS : CYCLONIC STORM (34-47 KT)
 SCS : SEVERE CYCLONIC STORM (48-63 KT)
 VSCS : VERY SEVERE CYCLONIC STORM (64-89 KT)
 ESCS : EXTREMELY SEVERE CYCLONIC STORM (90-119 KT)
 SuCS : SUPER CYCLONIC STORM (≥120 KT)

● LESS THAN 34 KT
 ○ 34-47 KT
 ○ ≥ 48 KT
 — OBSERVED TRACK
 — FORECAST TRACK
 ▲ CONE OF UNCERTAINTY

Forecast	DISTANCE (KM) AND DIRECTION FROM STATIONS		
Date and Time (UTC)	MAHABALIPURAM	MO PONDICHERRY	CHENNAI/MINAMB AKKAM
30.11.24/1800	80, SSW	0, NNW	120, SSW
01.12.24/0000	90, SW	10, WNW	120, SSW
01.12.24/0600	100, SW	30, W	130, SW



OBSERVED AND FORECAST TRACK ALONGWITH QUADRANT WIND DISTRIBUTION OF CYCLONIC STORM "FENGAL" OVER NORTH COASTAL TAMIL NADU AND PUDUCHERRY COASTS BASED ON 1800 UTC (2330 HRS. IST) OF 30TH NOVEMBER, 2024.



DATE/TIME : IN UTC
 IST : UTC + 0530
 KT : NAUTICAL MILE/HOUR = 1.85 KM/HOUR
 LPA : LOW PRESSURE AREA
 WML : WELL MARKED LOW PRESSURE AREA
 D : DEPRESSION (17-27 KT)
 DD : DEEP DEPRESSION (28-33 KT)
 CS : CYCLONIC STORM (34-47 KT)
 SCS : SEVERE CYCLONIC STORM (48-63 KT)
 VSCS : VERY SEVERE CYCLONIC STORM (64-89 KT)
 ESCS : EXTREMELY SEVERE CYCLONIC STORM (90-119 KT)
 SuCS : SUPER CYCLONIC STORM (≥ 120 KT)

● LESS THAN 34 KT
 ○ 34-47 KT
 ● ≥ 48 KT
 — OBSERVED TRACK
 — FORECAST TRACK
 ■ CONE OF UNCERTAINTY
 AREA OF MAXIMUM SUSTAINED WIND SPEED:
 ■ 28-33 KT (52-61 KMPH)
 ■ 34-49 KT (62-91 KMPH)
 ■ 50-63 KT (92-117 KMPH)
 ■ ≥ 64 KT (≥ 118 KMPH)

IMPACT OVER THE SEA

MSW (knot/kmph)	Impact	Action
28-33 (52-61)	Very rough seas	Total suspension of fishing operations
34-49 (62-91)	High to very high seas	Total suspension of fishing operations
50-63 (92-117)	Very high seas	Total suspension of fishing operations
≥ 64 (≥ 118)	Phenomenal	Total suspension of fishing operations